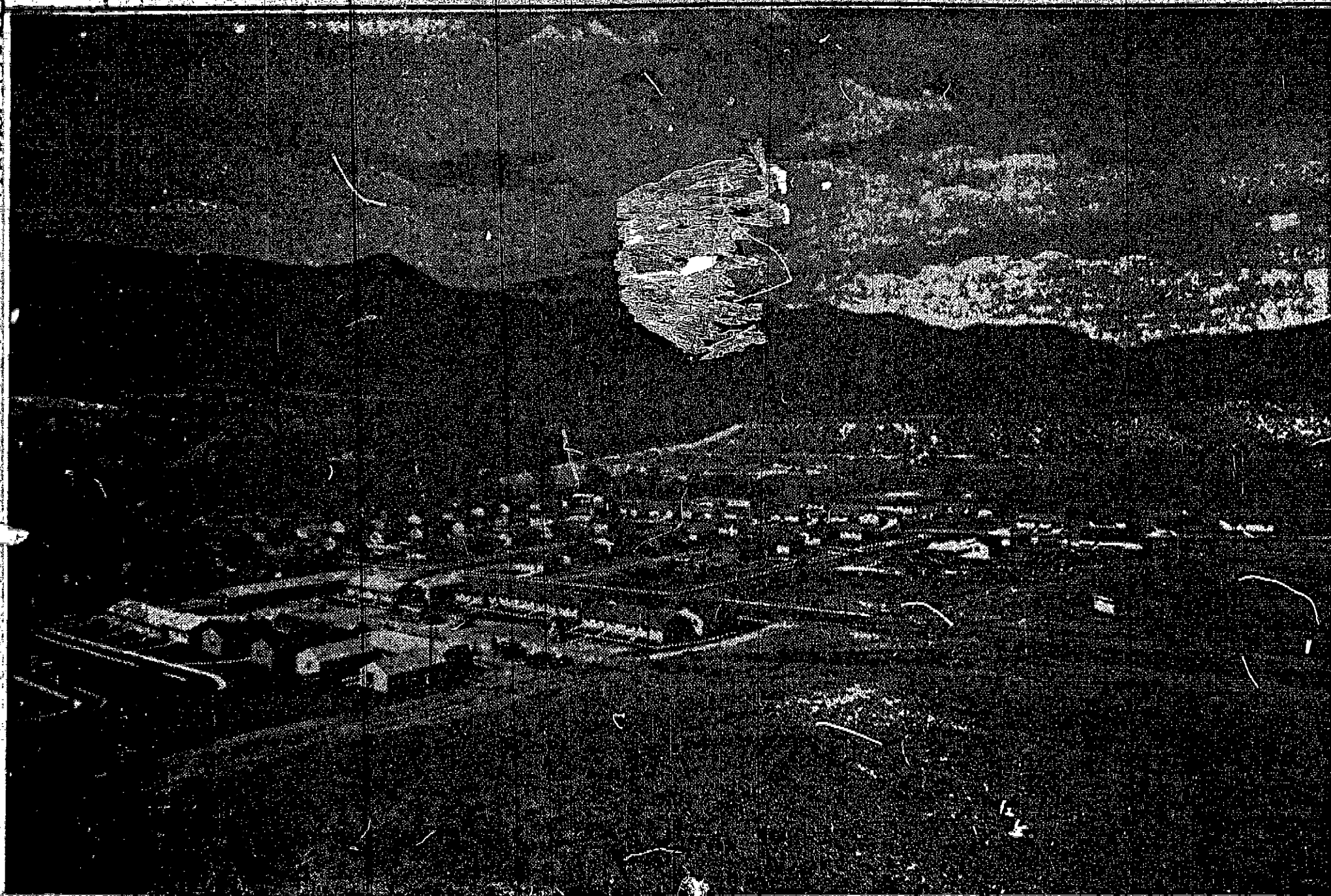


# GAZETTE TELEGRAPH

SUNDAY, SEPTEMBER 21, 1952

SECTION 1

SECTION 1



**SUBDIVISION'S SETTING SPECTACULAR**—Famed Pikes Peak forms a background for Pleasant Valley Subdivision, seen here from the east. In the left foreground are the Miramonte Apartments, and directly to the west of them is Pleasant Valley. The dividing line is 30th Street, which

leads to the Garden of the Gods, another world-renowned scenic spot. Forty homes already have been completed in the area and each home has a view of the towering Rocky Mountains. (Photo by Stewart's)